

Local Market Update – January 2011

A RESEARCH TOOL PROVIDED BY THE COLUMBUS BOARD OF REALTORS®
 BASED ON RESIDENTIAL LISTING DATA ONLY

Franklin County

January

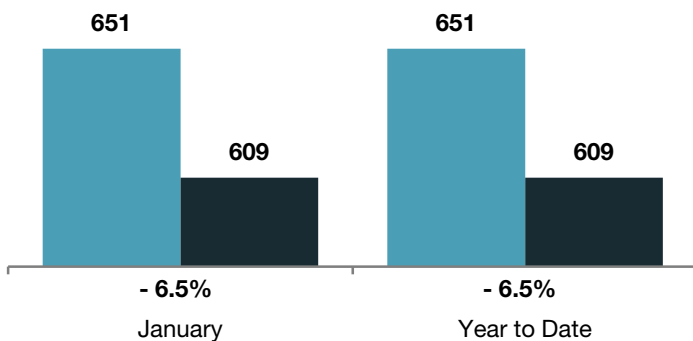
Year to Date

	2010	2011	+ / -	2010	2011	+ / -
Closed Sales	651	609	- 6.5%	651	609	- 6.5%
In Contracts	739	973	+ 31.7%	739	973	+ 31.7%
Average Sales Price*	\$137,724	\$136,851	- 0.6%	\$137,724	\$136,851	- 0.6%
Median Sales Price*	\$103,250	\$117,000	+ 13.3%	\$103,250	\$117,000	+ 13.3%
Average Price per Square Foot*	\$74.19	\$74.40	+ 0.3%	\$74.19	\$74.40	+ 0.3%
Percent of Original List Price Received*	90.8%	88.0%	- 3.1%	90.8%	88.0%	- 3.1%
Days on Market Until Sale	83	102	+ 23.1%	83	102	+ 23.1%
New Listings	2,151	1,629	- 24.3%	2,151	1,629	- 24.3%
Median List Price of Homes for Sale	\$129,999	\$132,000	+ 1.5%	\$129,999	\$132,000	+ 1.5%
Inventory of Homes for Sale	--	8,325	--	--	--	--
Months Supply of Inventory	8.7	8.2	- 6.2%	--	--	--

* Does not account for seller concessions. | Activity for one month can sometimes look extreme due to small sample size.

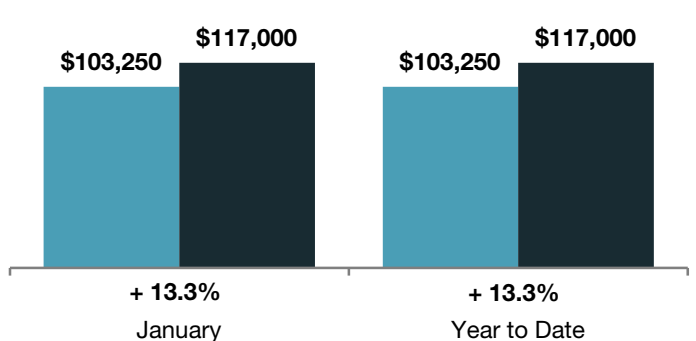
Closed Sales

■ 2010 ■ 2011

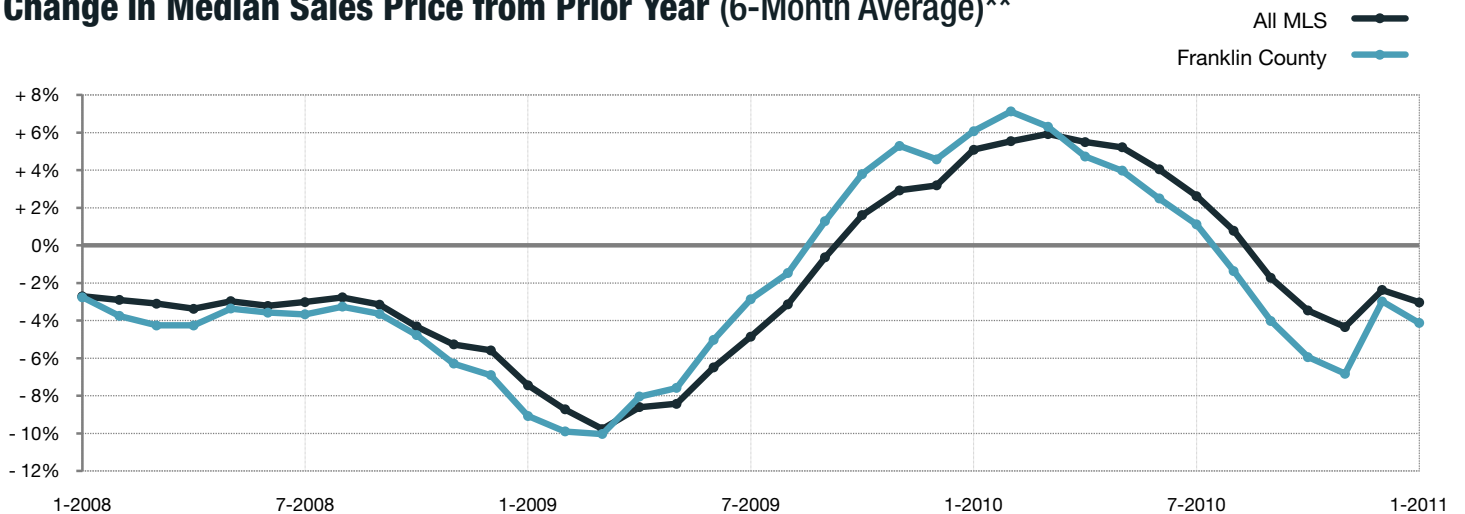


Median Sales Price

■ 2010 ■ 2011



Change in Median Sales Price from Prior Year (6-Month Average)**



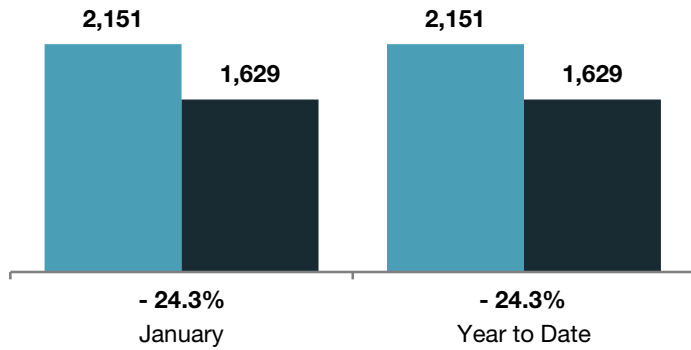
** Each dot represents the change in median sales price from the prior year using a 6-month weighted average. This means that each of the 6 months used in a dot are proportioned according to their share of sales during that period. | All data comes from the Columbus Board of REALTORS® MLS. Powered by 10K Research and Marketing. | Page 1 of 2

Local Market Update – January 2011

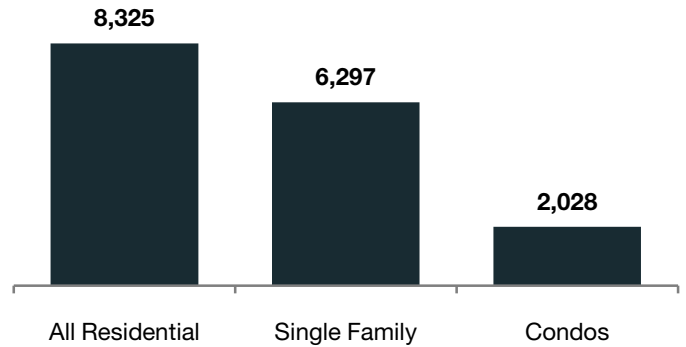
A RESEARCH TOOL PROVIDED BY THE COLUMBUS BOARD OF REALTORS®
 BASED ON RESIDENTIAL LISTING DATA ONLY

Franklin County

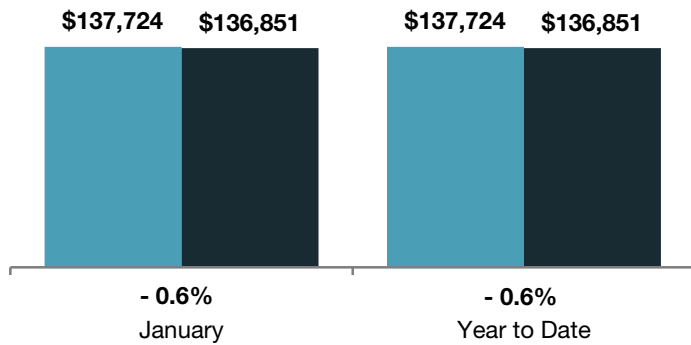
New Listings ■ 2010 ■ 2011



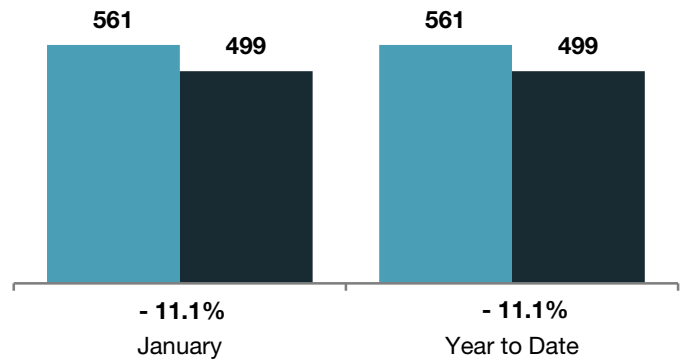
Inventory of Homes for Sale ■ 2011



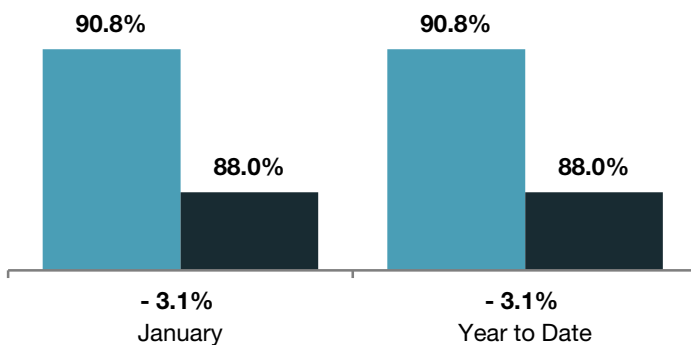
Average Sales Price ■ 2010 ■ 2011



Single Family Sales ■ 2010 ■ 2011



Pct. of Orig. List Price Received ■ 2010 ■ 2011



Condo Sales ■ 2010 ■ 2011

